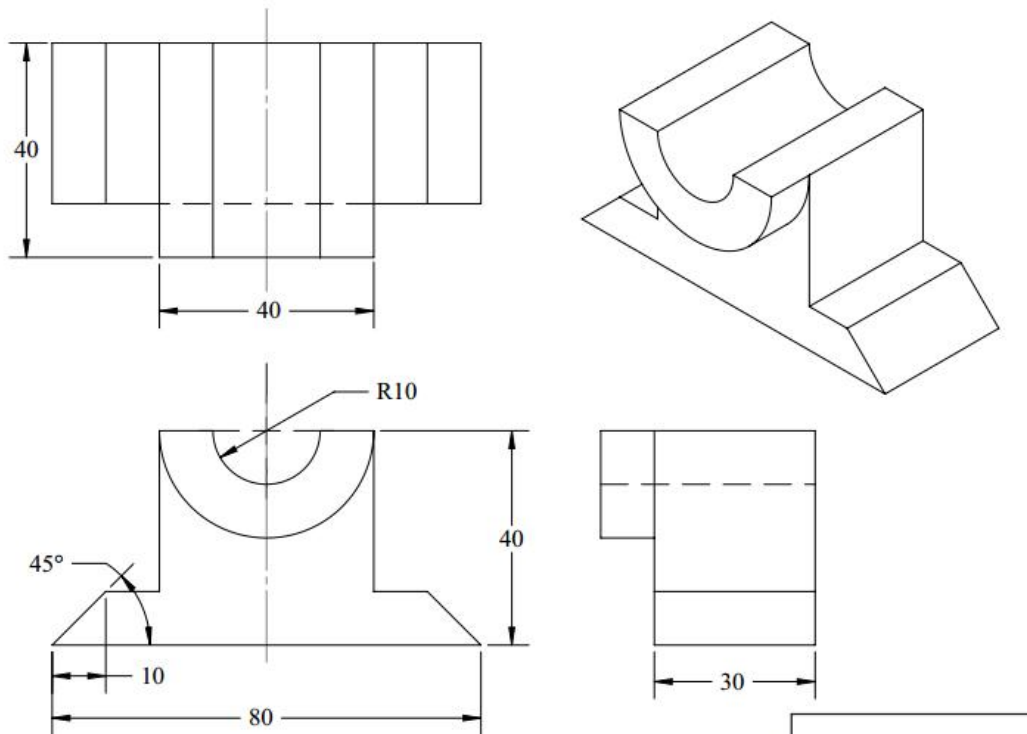
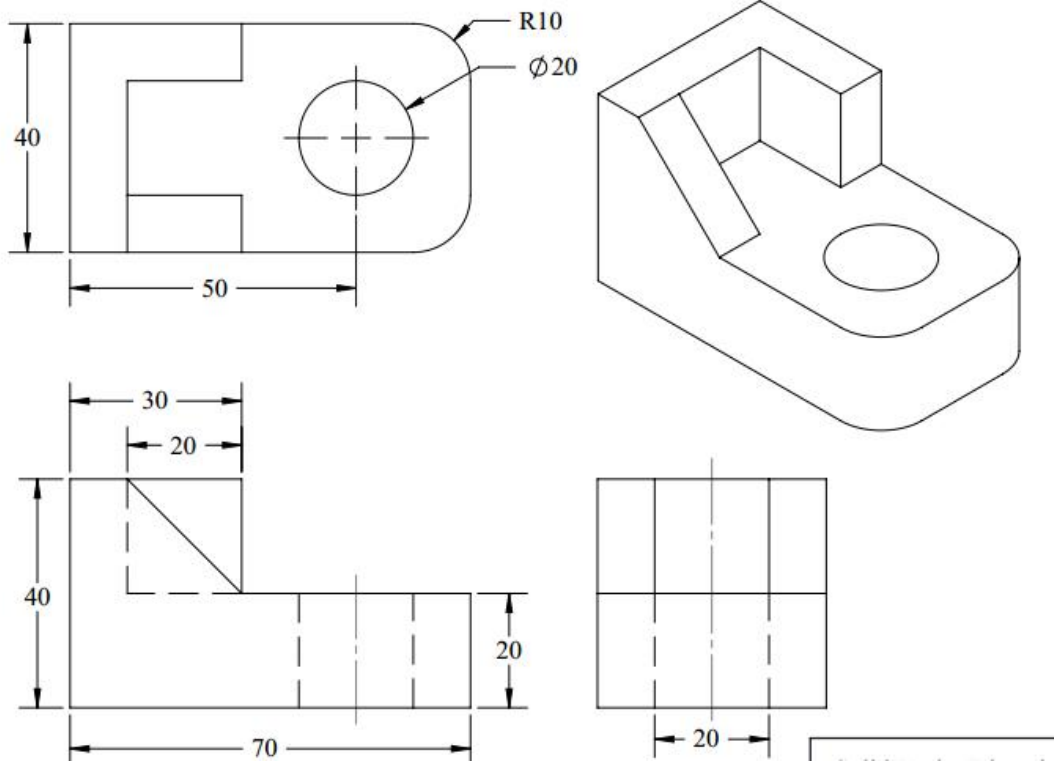


BÀI TẬP 3

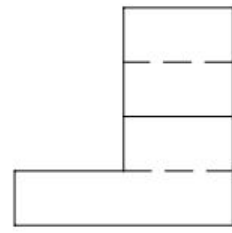
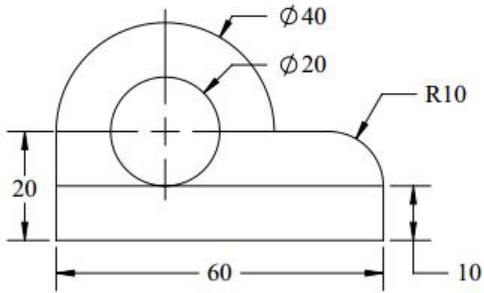
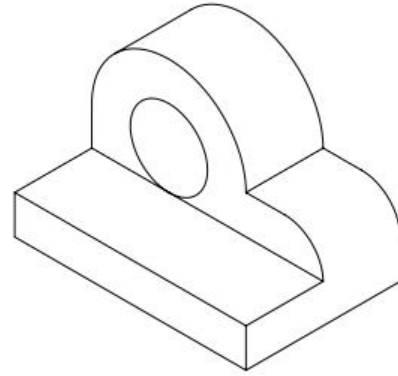
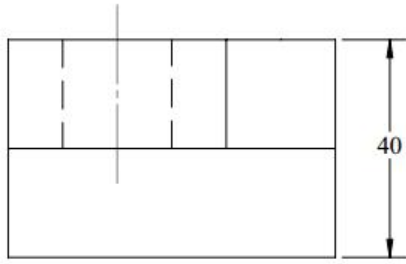
1. Sử dụng Extrude Boss/Base



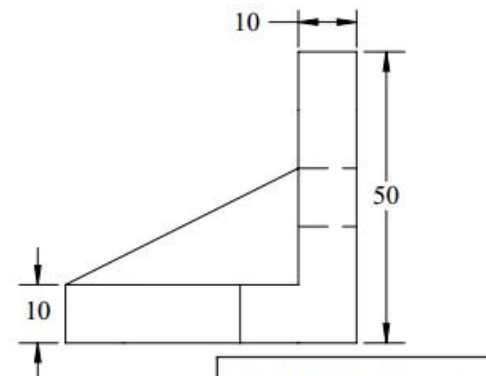
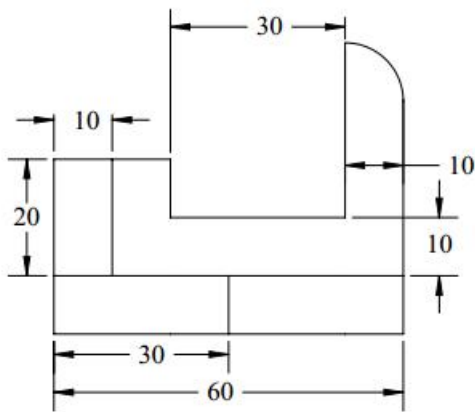
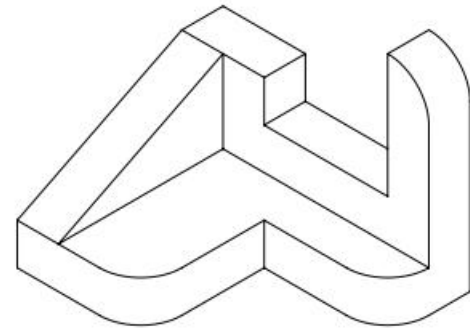
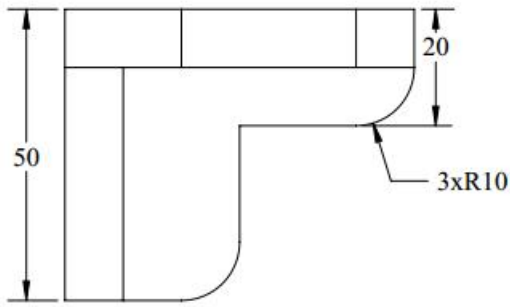
3.1



3.2

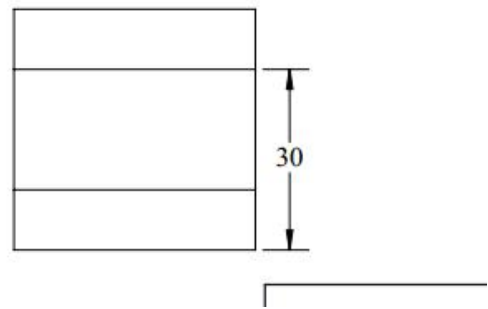
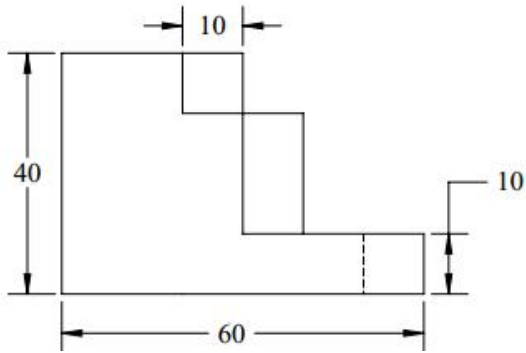
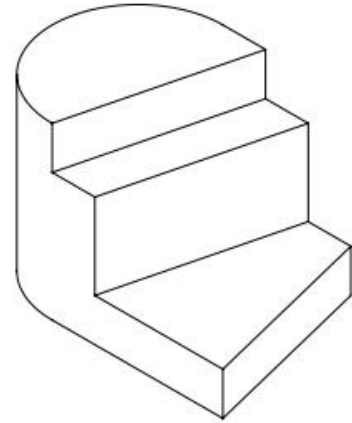
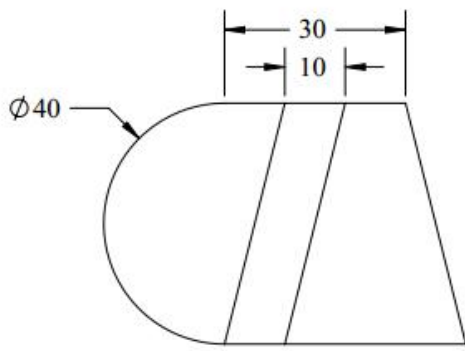


3.3

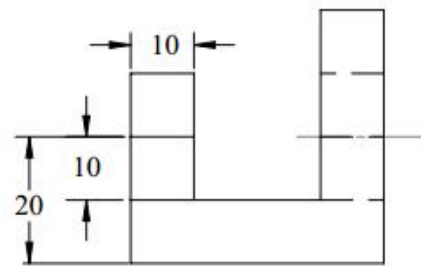
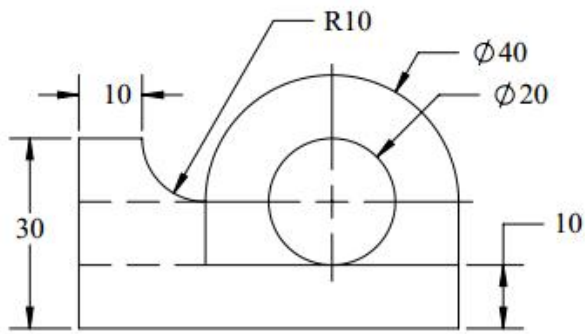
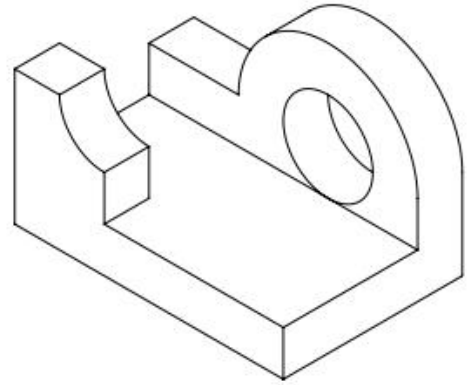
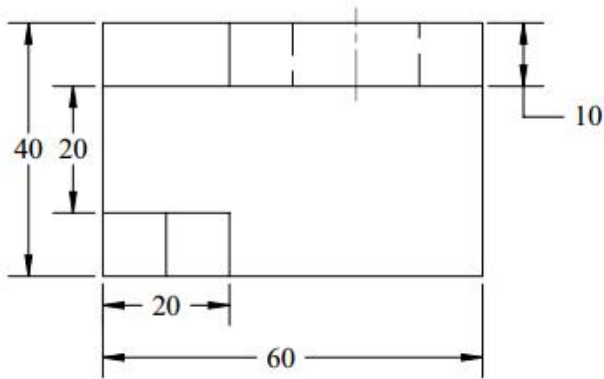


SolidWorks Education
Lesson 5

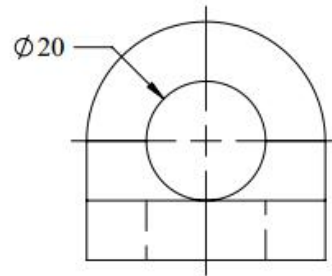
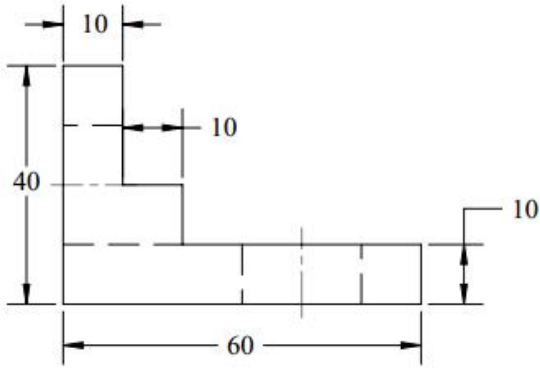
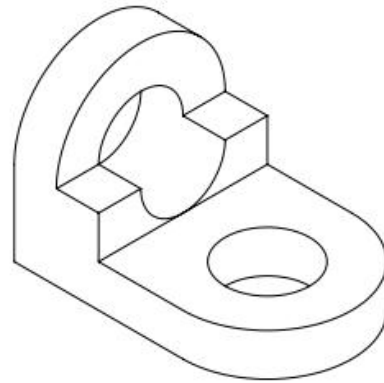
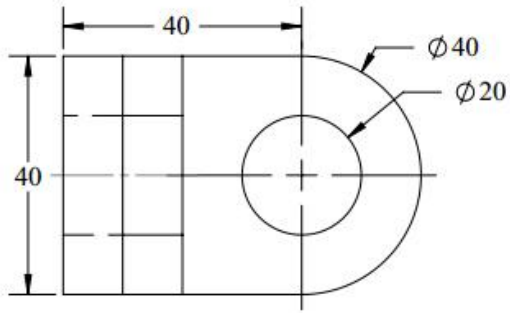
3.4



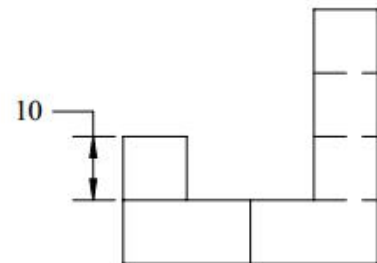
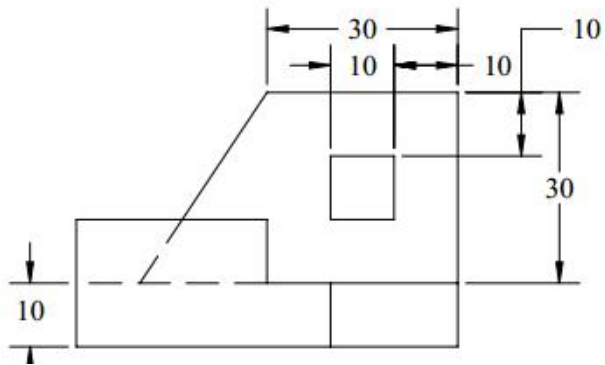
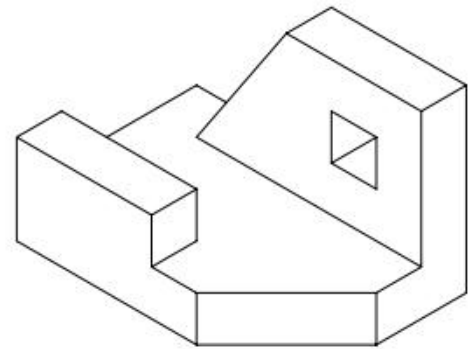
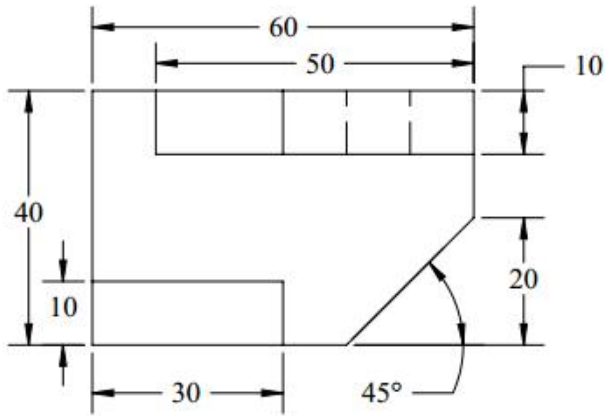
3.5



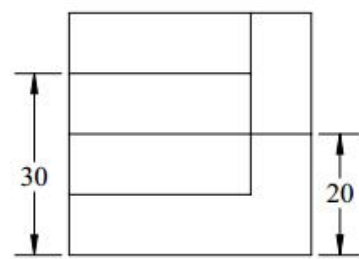
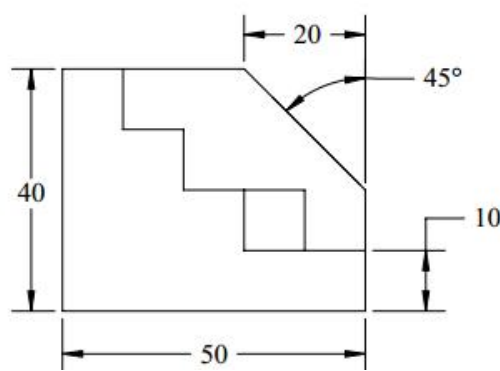
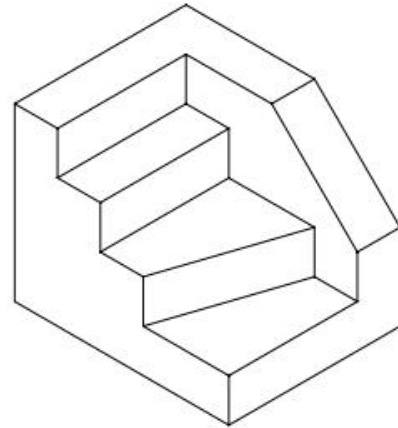
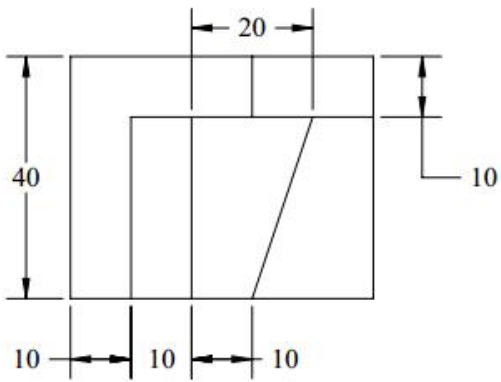
3.6



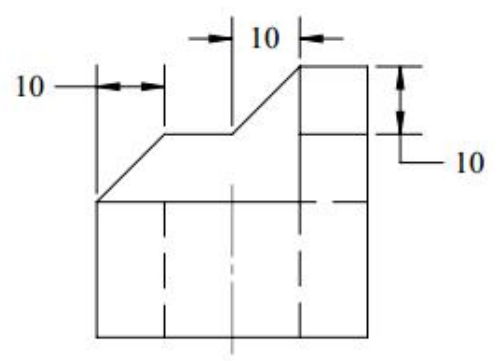
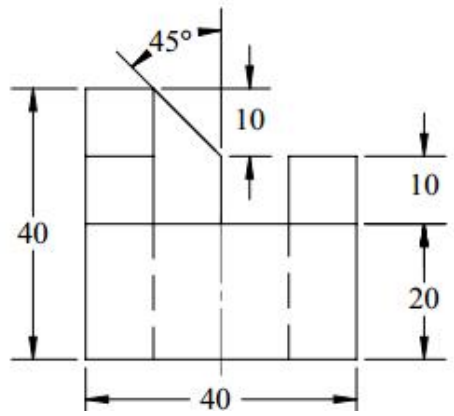
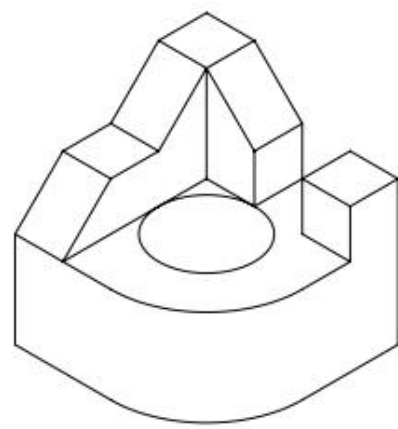
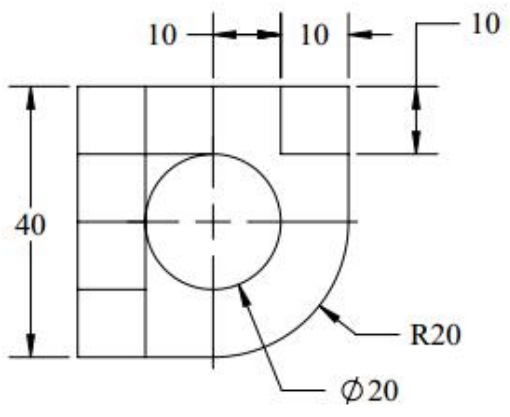
3.7



3.8



3.9

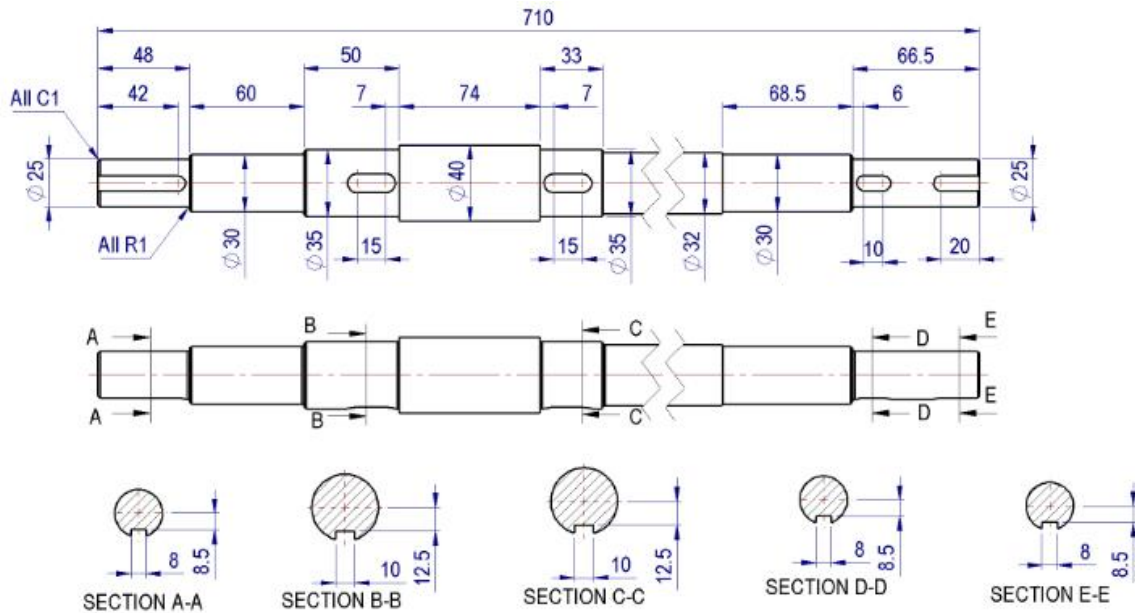


3.10

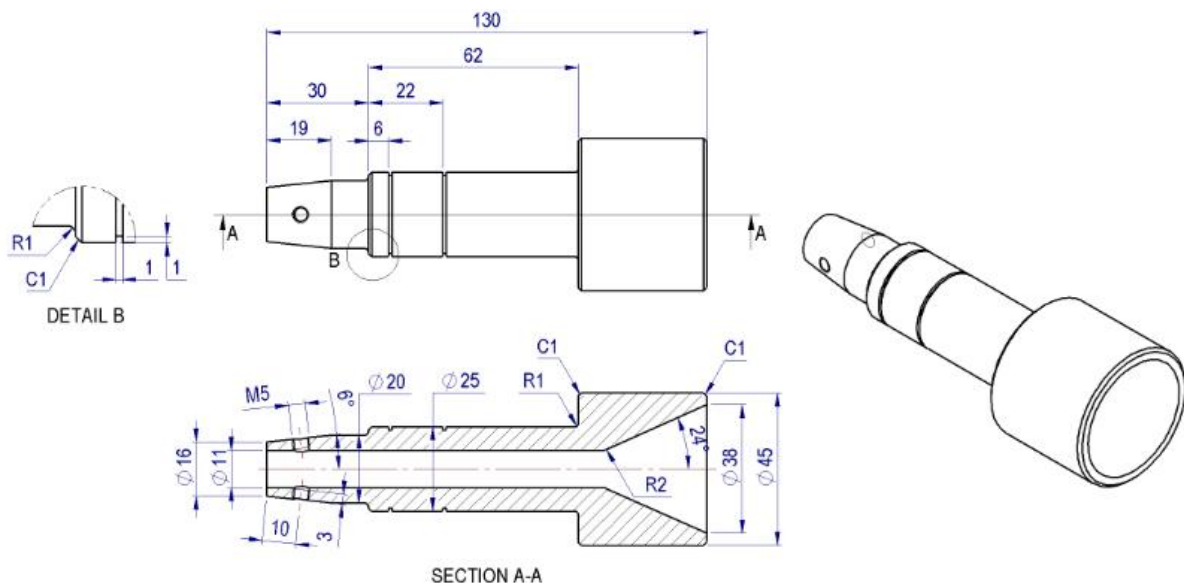
2. Sử dụng Extrude Cut

Thực hiện lại các bài tập Extrude Boss/Base ở mục 1 bằng cách xây dựng khối Extrude Boss/Base sau đó Extrude cut để được mô hình. (tên bài tập từ 3.11 đến 3.20)

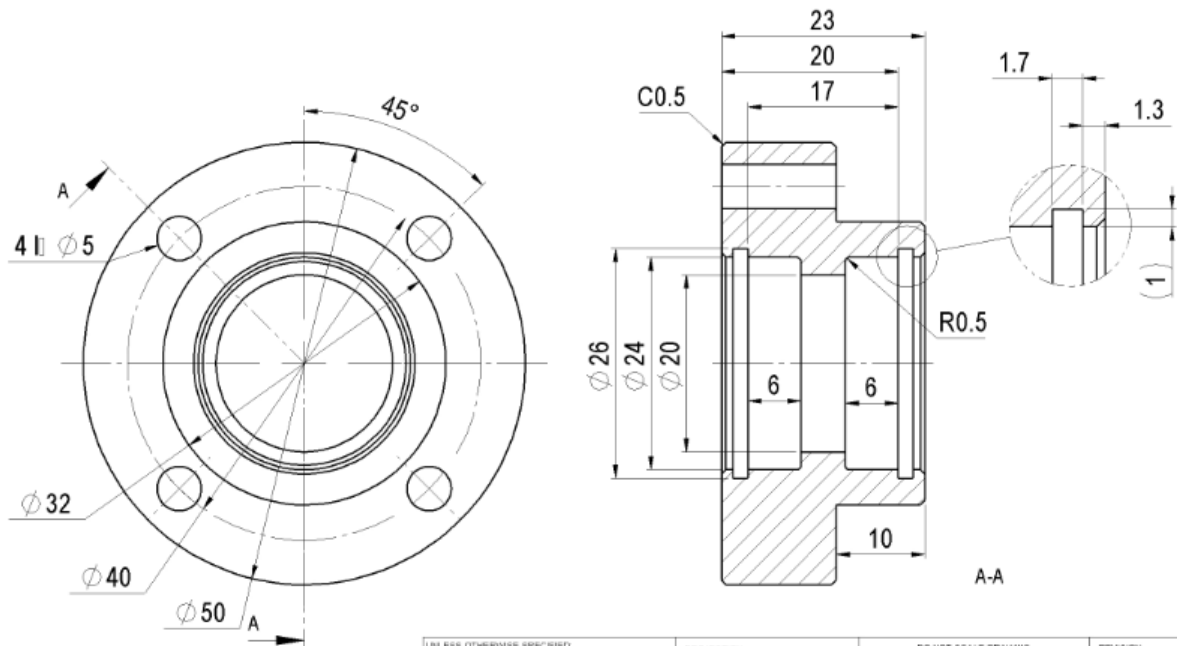
3. Sử dụng Revolve Boss/Base. Các rãnh then có thể dùng Extrude cut để xây dựng.



3.21

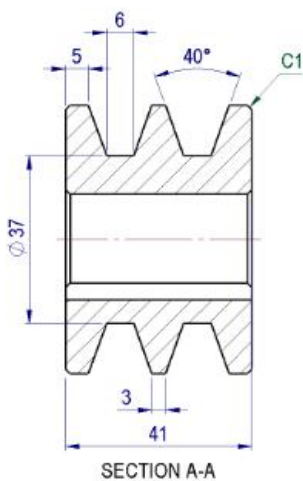
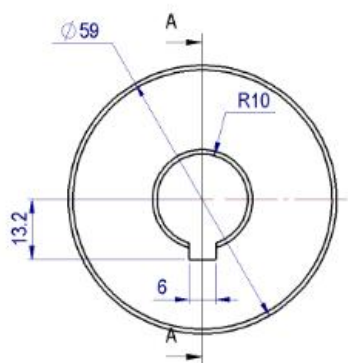


3.22

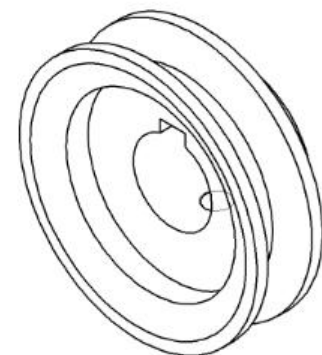
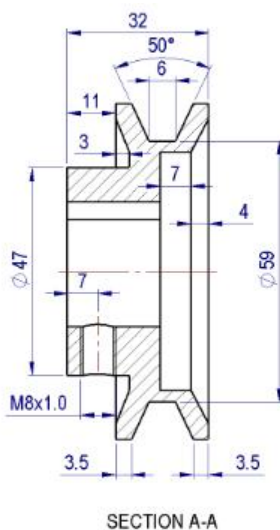
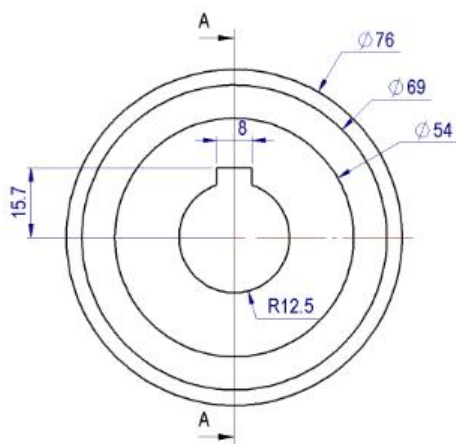


UNLESS OTHERWISE SPECIFIED
 PROJECTION
 DO NOT SCALE DRAWING
 REVISION

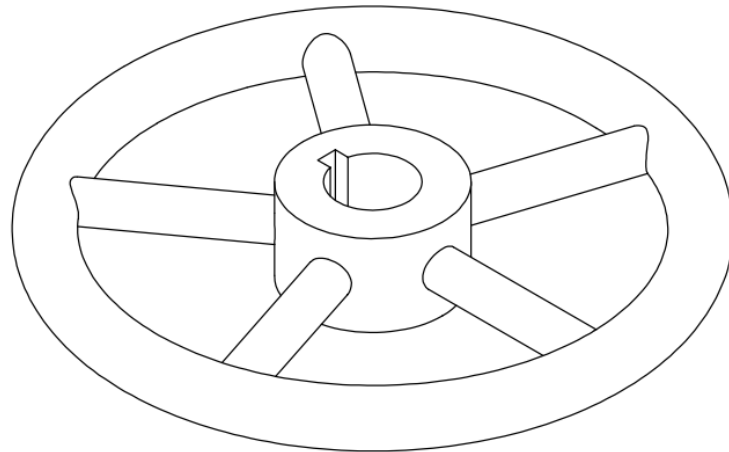
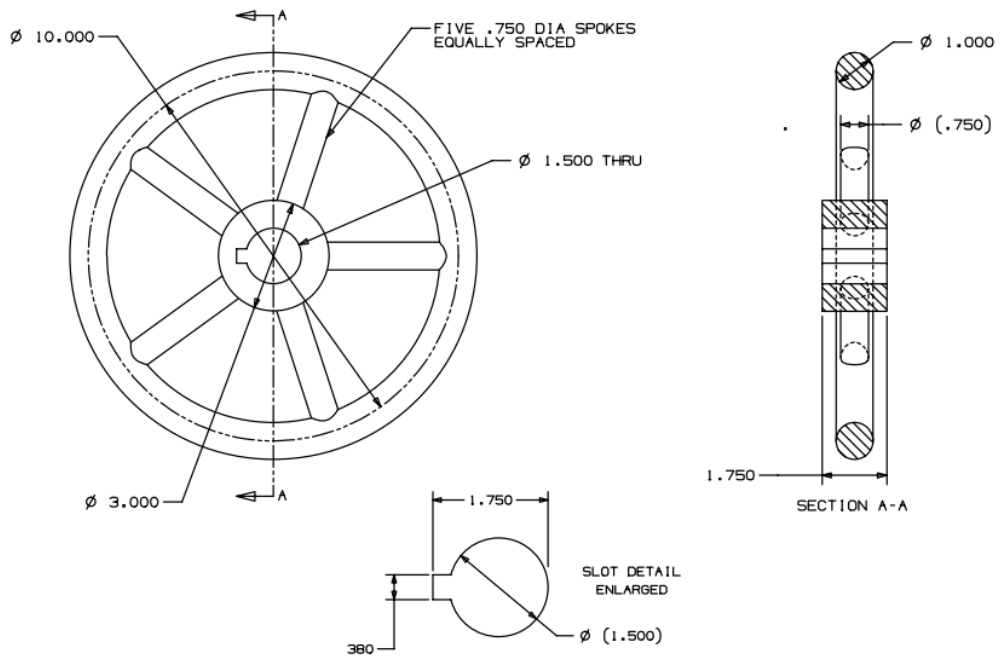
3.23



3.24

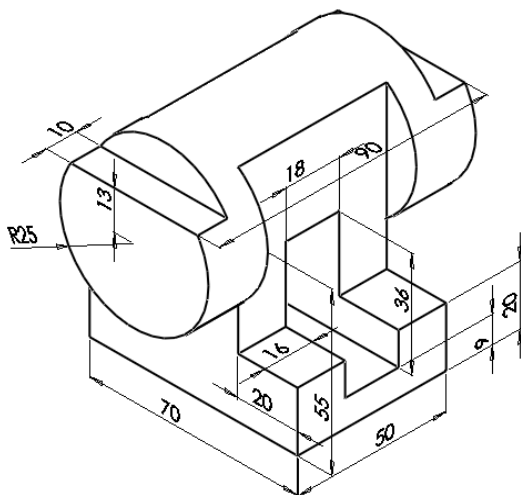


3.25

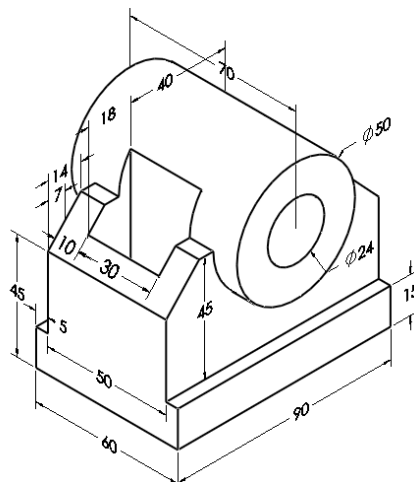


3.26.

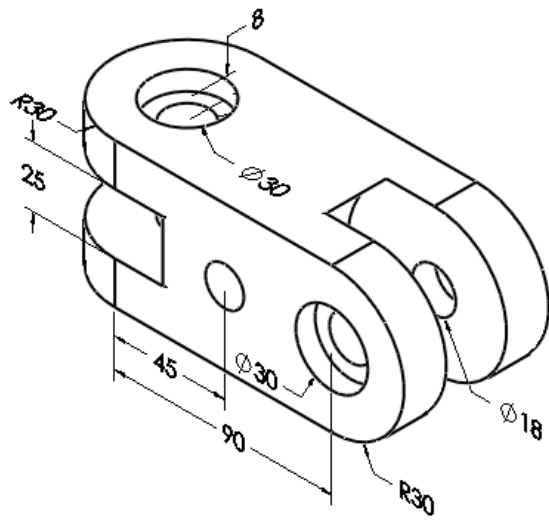
4. Bài tập hỗn hợp



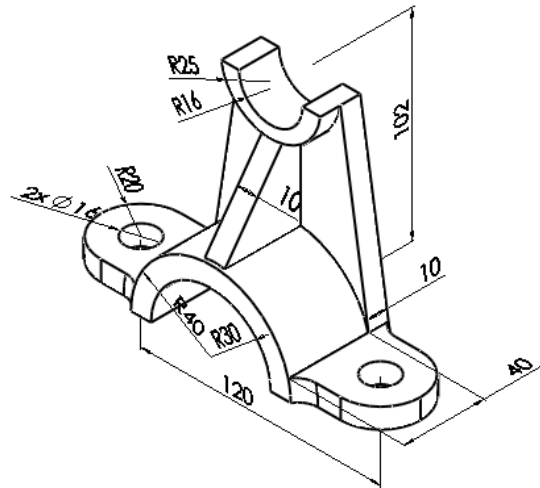
3.27



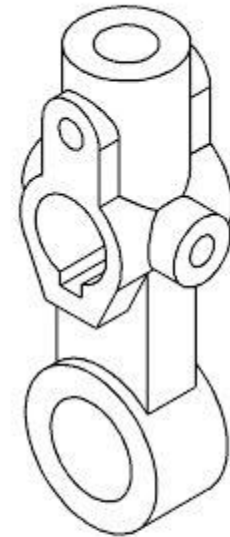
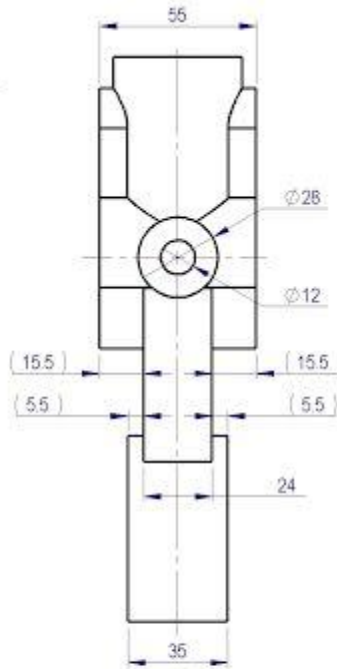
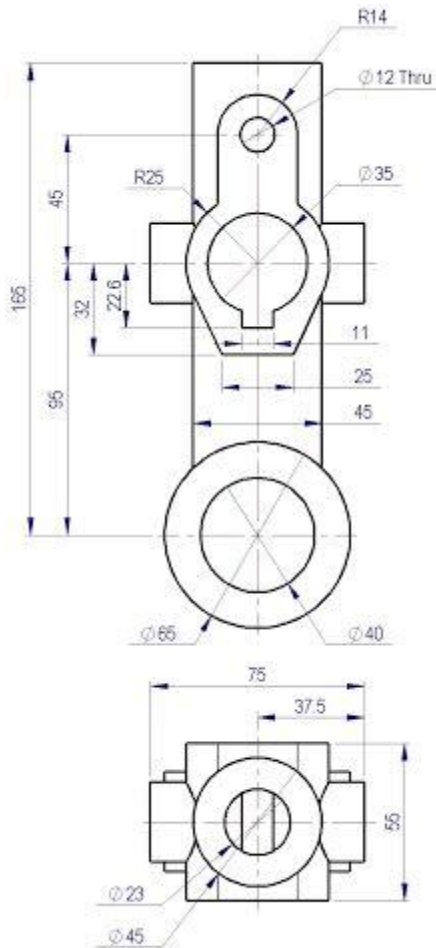
3.28



3.29



3.30



YÊU CẦU:

- Vật liệu: Copper
- Hệ đơn vị: MMGS
- Khối lượng: Gram
- Loại phôi:
- Kích thước phôi:

3.31.