

Email to me if you have any question about this assignment: [tho@hcmuaf.edu.vn](mailto:tho@hcmuaf.edu.vn)

## Course: Server-Side Web Development and Programming

### Assignment 1: Java Server Pages

Due Tuesday, January 13

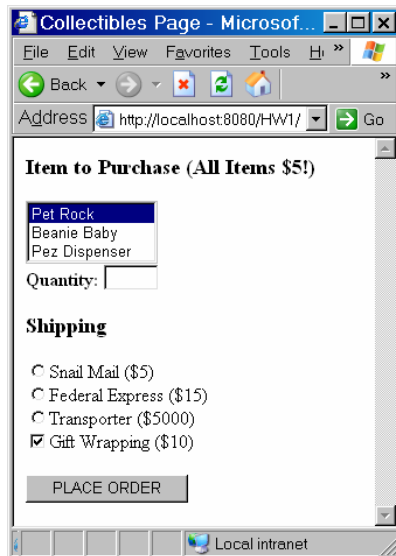
#### Introduction

You are to implement a simple “purchase page” Java Server Page called `Bill.jsp`.

Customers will enter information about a purchase into a client-side web page (which I will provide), and your server page will generate a response that outlines the total bill for that purchase.

#### Client-side Web Page

The client-side web page is available at the course web site as a file called `index.jsp`. You can paste the code into the `index.jsp` page of the web site that you create in NetBeans for this assignment.



It has a number of different types of inputs, including text, checkboxes, radio buttons, and lists. Note that the list is not a multiple selection list (for now).

Email to me if you have any question about this assignment: [tho@hcmuaf.edu.vn](mailto:tho@hcmuaf.edu.vn)

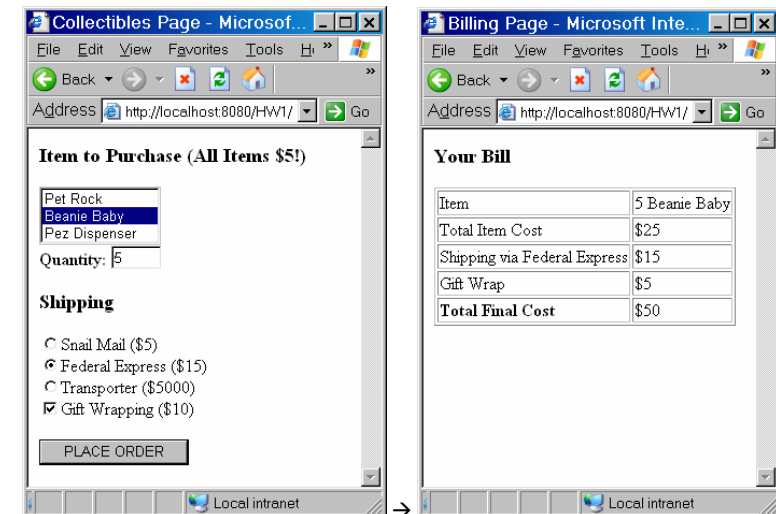
You will need to examine the source code of the page in order to determine the **name** (and the associated **value** for the radio buttons and the list options), since you will need to use them in your server to acquire the corresponding values entered by the user.

#### Server-side Response Page

You are to provide a **response** page which displays a simple **bill** for this purchase. It should list:

- o The item name and quantity entered by the customer.
- o The cost of that many items (a \$5 per item for now).
- o The chosen shipping method and cost.
- o The cost of gift wrapping (if chosen).
- o The total cost.

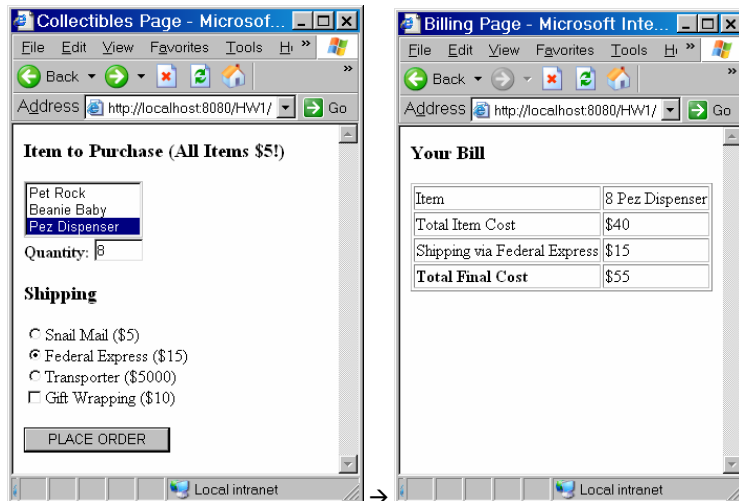
For example:



#### Conditional Display

If the customer unchecks the gift wrapping option, that line should not be displayed in your response page at all:

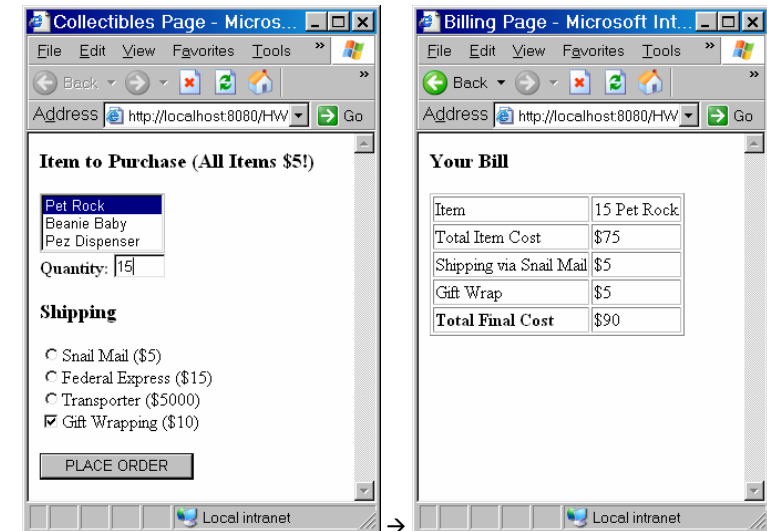
Email to me if you have any question about this assignment: [tho@hcmuaf.edu.vn](mailto:tho@hcmuaf.edu.vn)



### Default Shipping

If the user does not select any shipping plan, your response page should default to shipping via snail mail:

Email to me if you have any question about this assignment: [tho@hcmuaf.edu.vn](mailto:tho@hcmuaf.edu.vn)



### Things You May Assume

You may assume the following (which we will actually validate with servlets in the next assignment):

- o The user will always select some item from the list (note that "Pet Rock" is already selected by default).
- o The user will always enter a legal number for the quantity.

### Other Notes

As with any other program you write, your server page must be **well documented**.

Extra credit may be given for server pages that are particularly well designed, or have particularly nice output.

### What to Turn In

You submit to **me** your **Bill1.jsp** file (which you can find in the **web** subdirectory of your site) in the lab session.