

Server-Side Web Programming

Assignment 2: Servlets and Validation

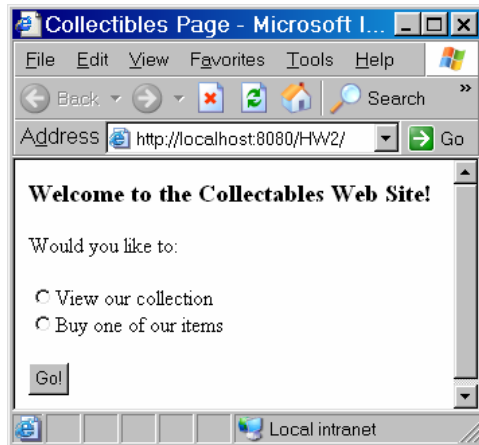
Due Tuesday, February 24

Introduction

You will extend your “purchase” web site by adding a couple of servlets to do redirection and validation.

Simple Redirection

To get you started, you will add a new “front” to your web site, which gives the customer the choice of either getting descriptions of items or going directly to the purchase page. I have provided this page, called `index.jsp`.



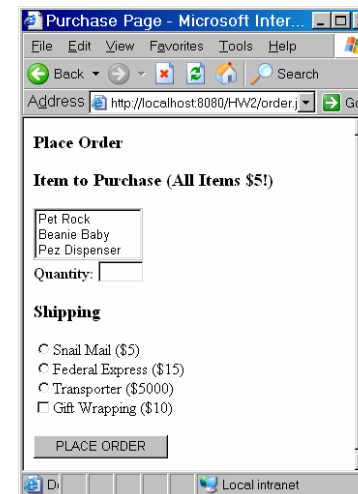
When the user selects a choice and presses the button, this page will call a servlet called `Redirect`.

You are to create this servlet. It must determine which radio button was checked, and redirect the user to one of two web pages:

- If the user chose “View our collection”, redirect them to `view.html`. This is a very simple web page I have provided, with a few links. It also has a button which sends them on to the order page.



- If the user chose “View our collection”, redirect them to `order.jsp`. This is a new version of the “ordering page” that I gave you in the first assignment. It is also available on my web page (although you will be modifying it!). Make sure you use the new version on my web page instead of the one from the previous assignment.

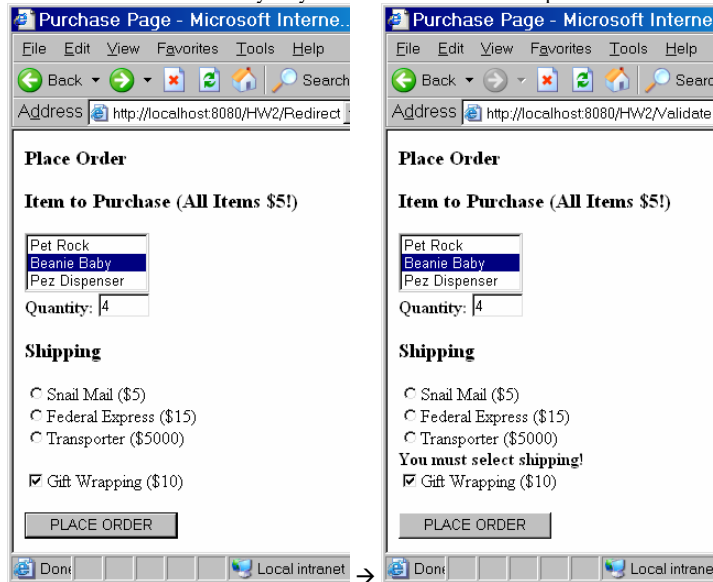


Input Validation

The second part of the assignment is more complicated.

When the `order.jsp` page is submitted, it is sent to a servlet called `Validate`.

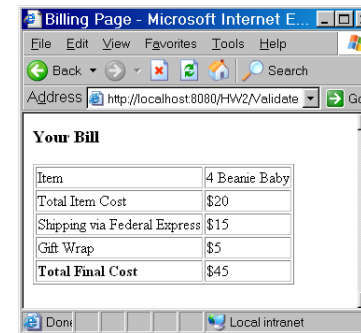
In this servlet, you are to **validate** the options chosen by the user. If any are invalid, the user must be informed so they may correct the error. For example:



Determining what must be validated is a **major design decision on your part!**

The one thing I will specify is that the user must now specify a shipping method (as shown in the example above). However, it is up to you to determine what other mistakes the user can make, and what kind of messages to display.

If the information is all valid, then the user should be redirected to the `Bill.jsp` file that you created in the previous assignment.



Echoing Previous Input

As was also shown in the example above, your error page must **echo** inputs entered by the user in the previous page (item selected, quantity, shipping chosen, gift wrap).

Other Notes

As with any other program you write, your server page must be **well documented**.

Extra credit may be given for server pages that are particularly well designed, or have particularly nice output.

What to Turn In

You **submit to me** your **project** in the lab session.