



Ministry Of Agriculture and Rural Development
Extension Service

Animal Production Division
Dep. of Cattle Husbandry

Beef Cattle Production



gilsagee@gmail.com

Course content

- 1. Introduction**
- 2. Breeds of cattle**
- 3. Beef cattle breeding management**
- 4. Beef cattle feeding management**
- 5. Beef cattle reproduction management**
- 6. Cattle fattening**
- 7. Cattle slaughtering in Israel**

Beef Cattle Production

Dr. M. Rosen

Agrostudies program

March 2009



Course Notes

Links

[Livestock Science](#)

[The Ag Library](#)

[Plant Science](#)

[Related Institutions](#)

<http://www.ambal.co.il/beefstudies/>

Introduction



BEEF INDUSTRY FACTS ISRAEL

- **Per capita consumption in 2007 was:**
 - ◆ **Beef - 17 Kg.**
 - ◆ **Poultry - 60 Kg.**
 - ◆ **Ovine - 4 Kg.**

Beef production / consumption in Israel

	Total tones
Beef Consumption	119,000
Beef Production	69,000
Dairy	30,330
Beef	7,670
Imported live	31,000
Total local	38,000
Beef Import (frozen)	50,000
Total	119,000

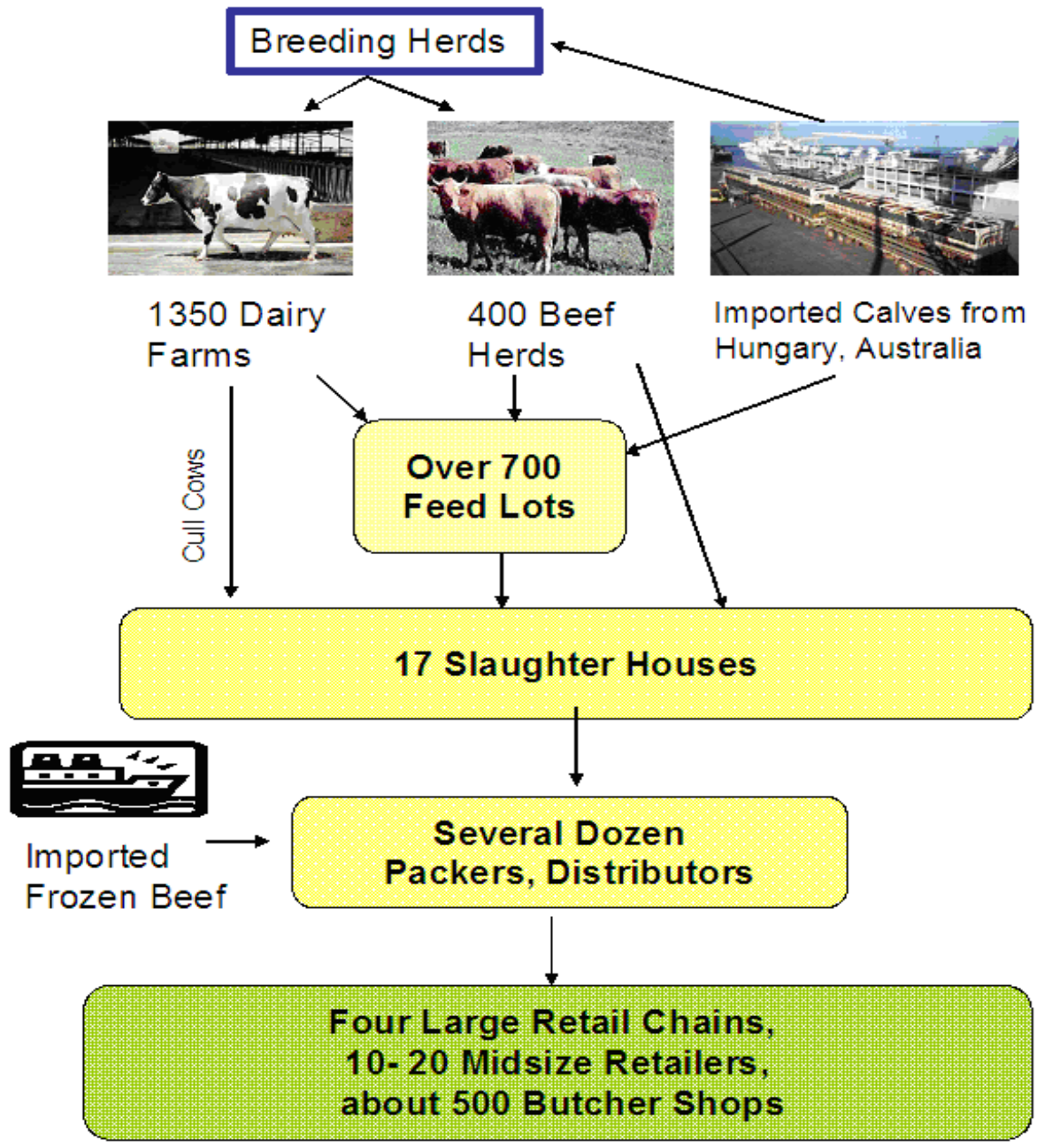
Estimate of beef slaughtered by source in a representative year.

	Head	
Dairy Herd		
Cows	40,000	
Bulls and Heifers	75,000	
Total	115,000	50.0%
Beef Herd		
Cows	5,000	
Heifers	13,000	
Fattening bulls	17,000	
Total	35,000	15.0%
Imported Calves Slaughtered	80,000	35.0%
Grand total	230,000	100.0%

ISRAEL BEEF INDUSTRY STRUCTURE

- **Seedstock**
- **Commercial Cow-Calf**
- **Dairy**
- **Feedlot**
- **Packer**
- **Retailer**
- **Consumer**
- **10 breeders**
- **400 producers**
- **1350 dairy farms**
- **700 (~1500) feedlots**
- **~20 packers**
- **~20 food chains**
- **6.5 million**

Structure of Israel's Beef Industry



1350 Dairy Farms



400 Beef Herds



Imported Calves from Hungary, Australia

Cull Cows



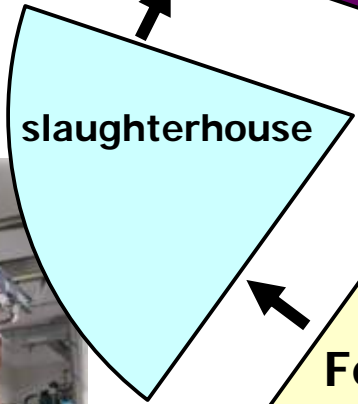
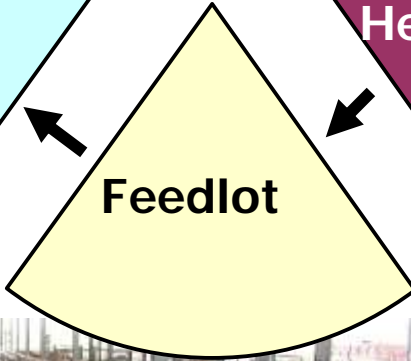
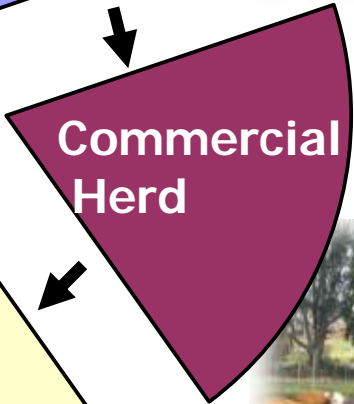
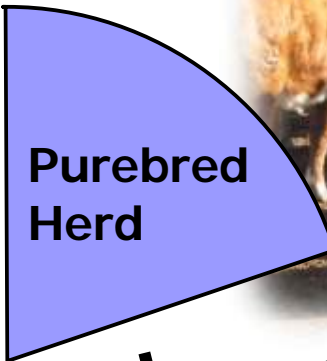
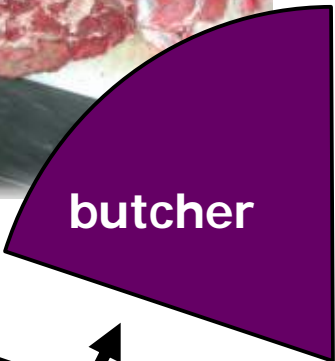
Imported Frozen Beef

Industry Structure

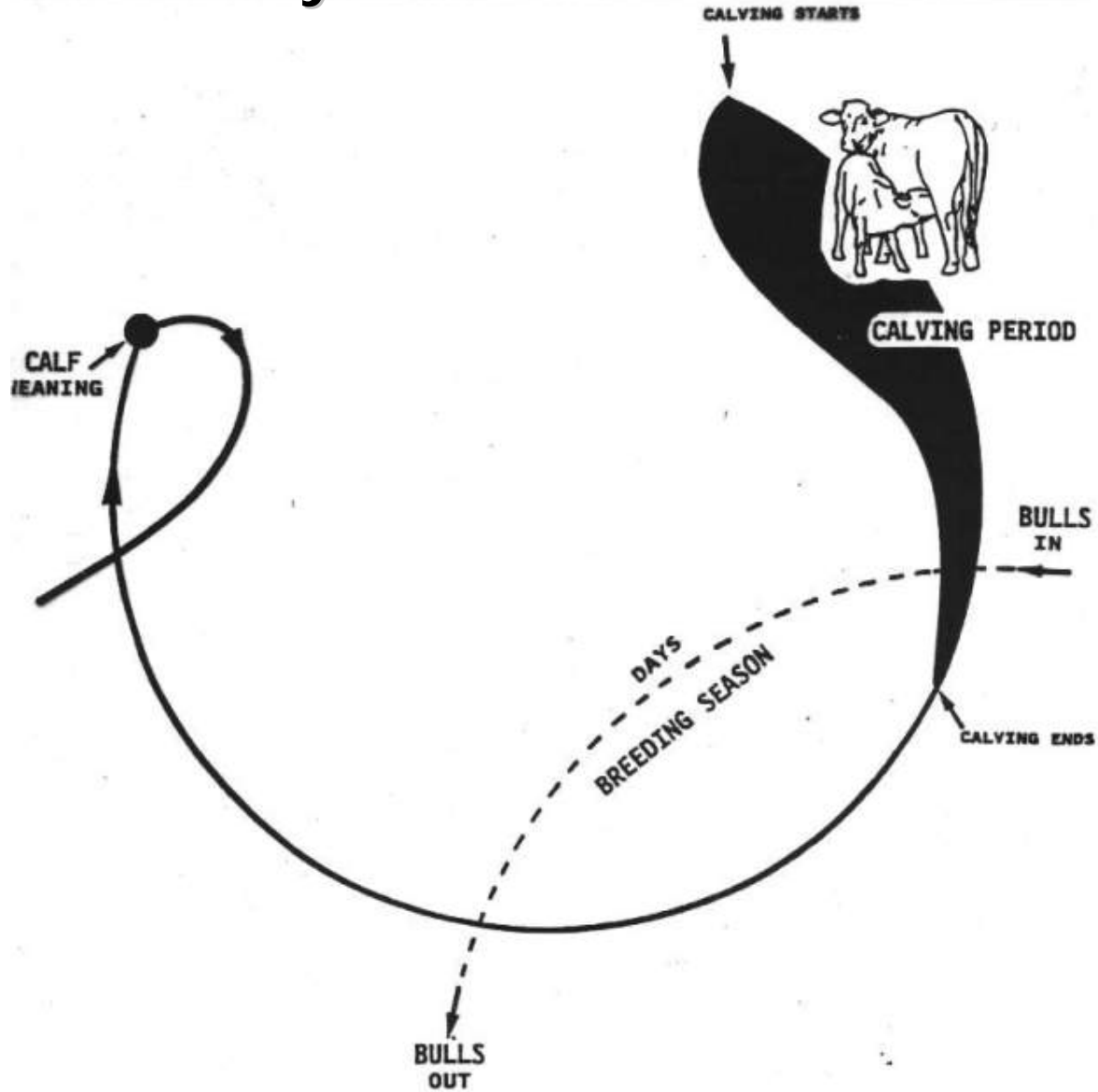


Consumer

Horizontal structure

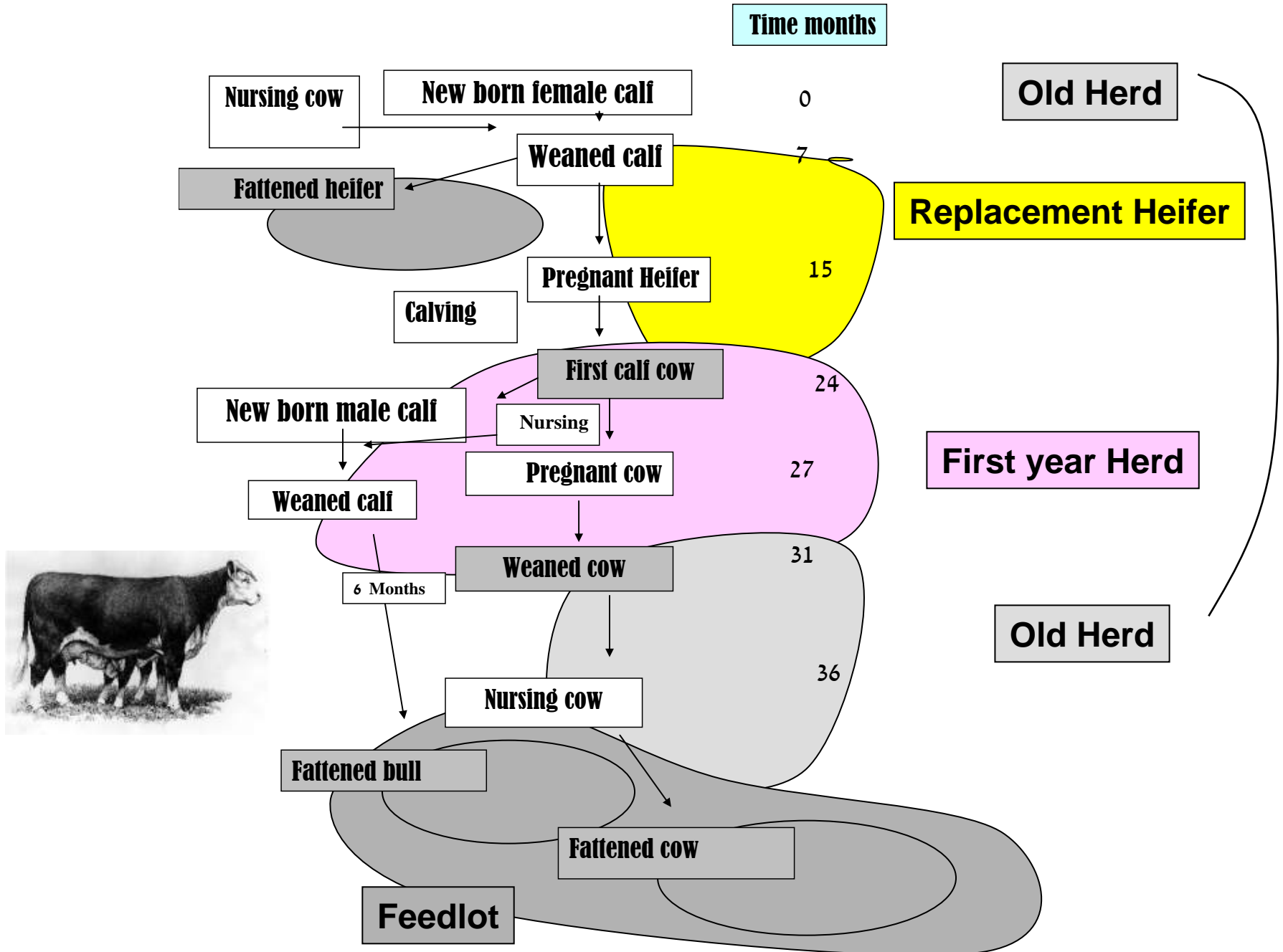


Life Cycle

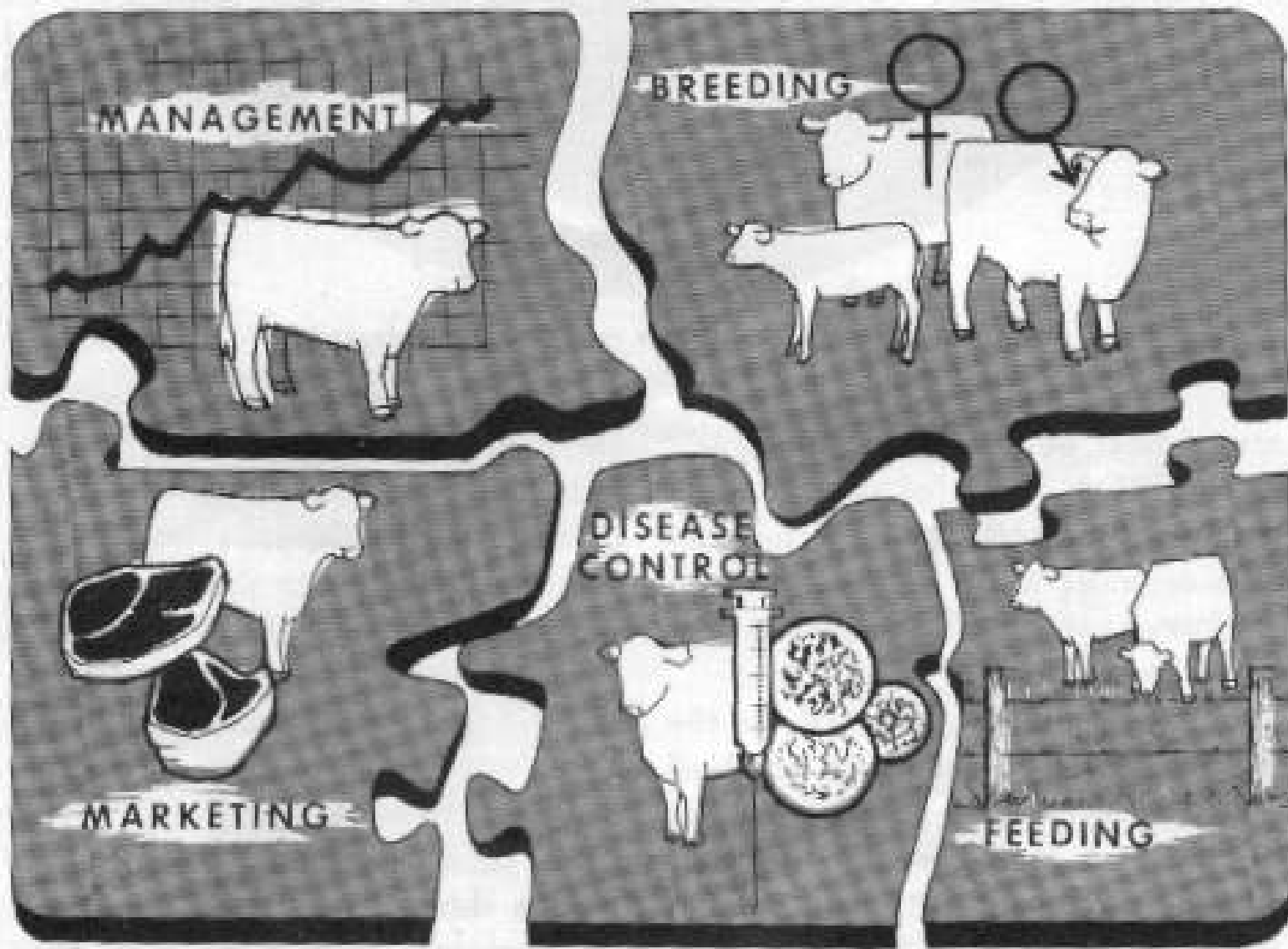


Beef Cattle Herd - Life cycle

Vertical structure



By Subject structure



By season structure

calving starts



Calving season

Bull in

calving ends

Breeding Season

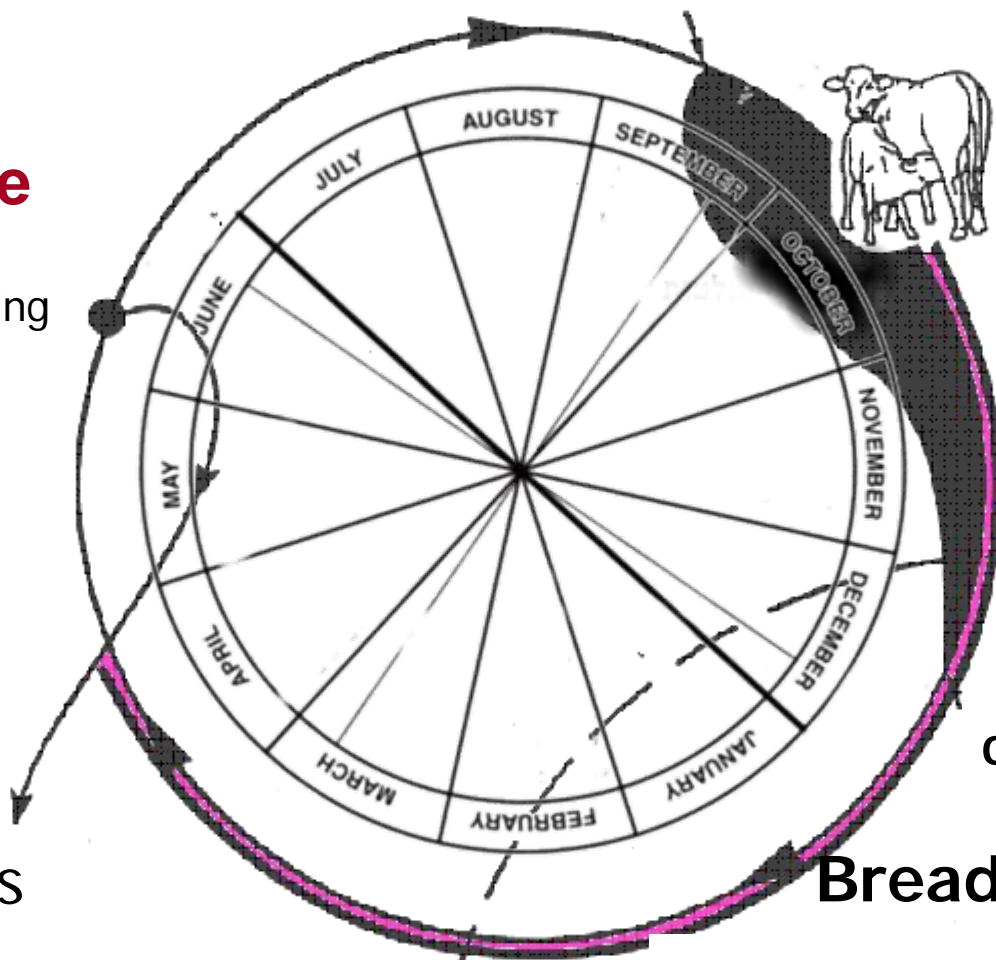
High nutritional requirements

Bull out

Calves

weaning

Weaning time



Cow-Calf Herd

70,000 heads

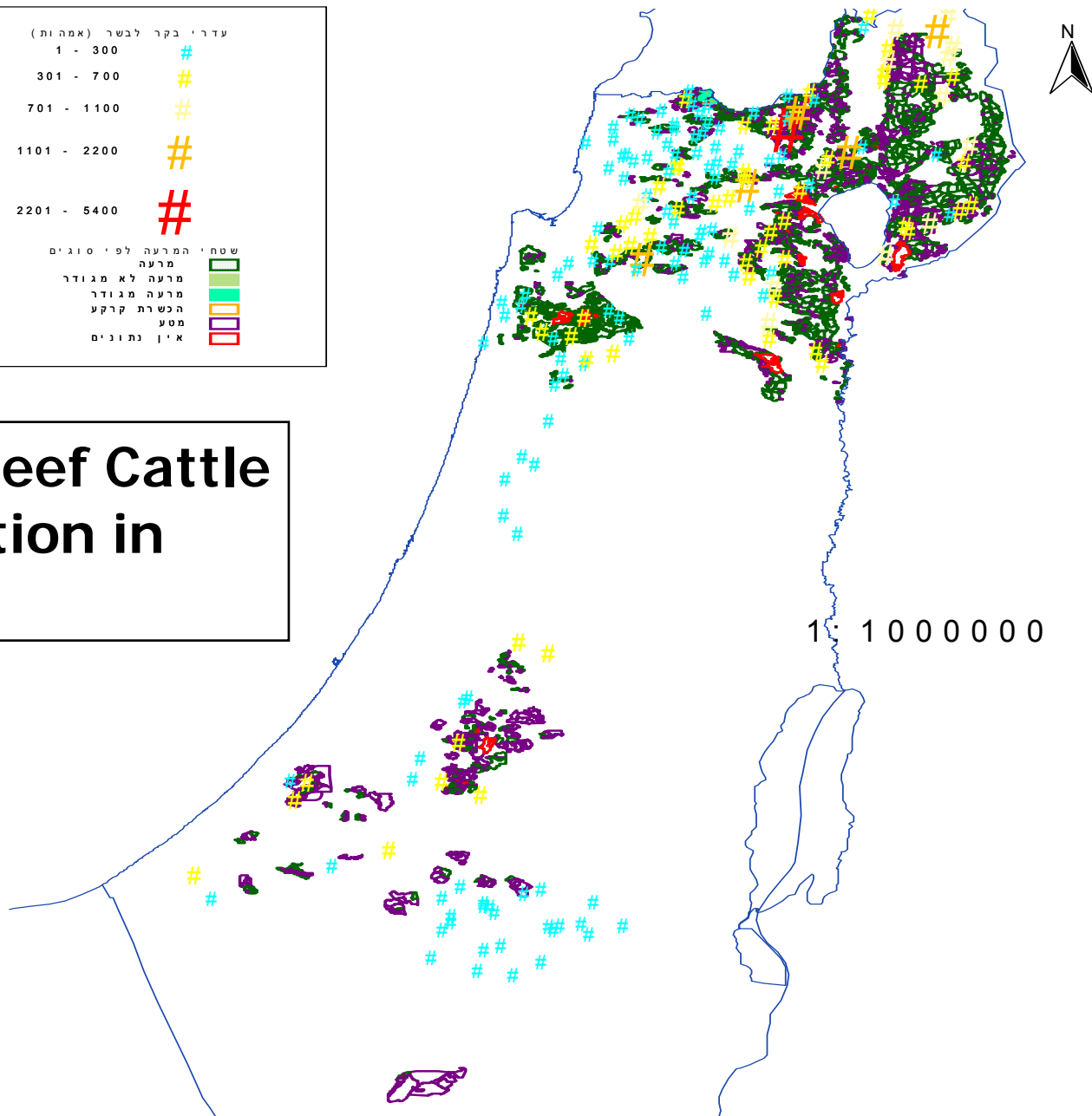
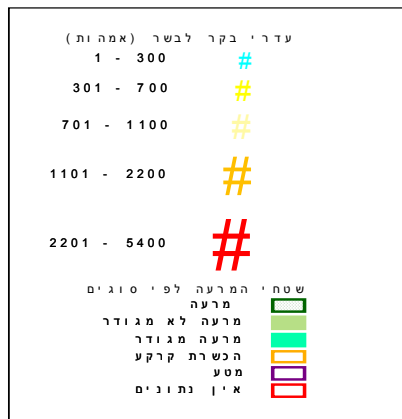
Traits of interest



- a. **Weaning weight: calves are sold by weight!**
 - a. **800-1000\$ / 1st cwt* (kg) + 1.5-2\$ for each additional kg**
- b. **Calf crop weaned: % of cows weaning a calf (68%)**
- c. **Annual cow expenses: ~\$400.**
- d. **Longevity: reproductive life in the herd (9 years)**
- e. **Carcass composition: most important to cow-calf producers that will retain ownership in weaned calves.**
- f. **of ~80 beef cattle breeds in Israel, 4 breeds are the most important & 5 comprise 80% of the genetics in Israel.**

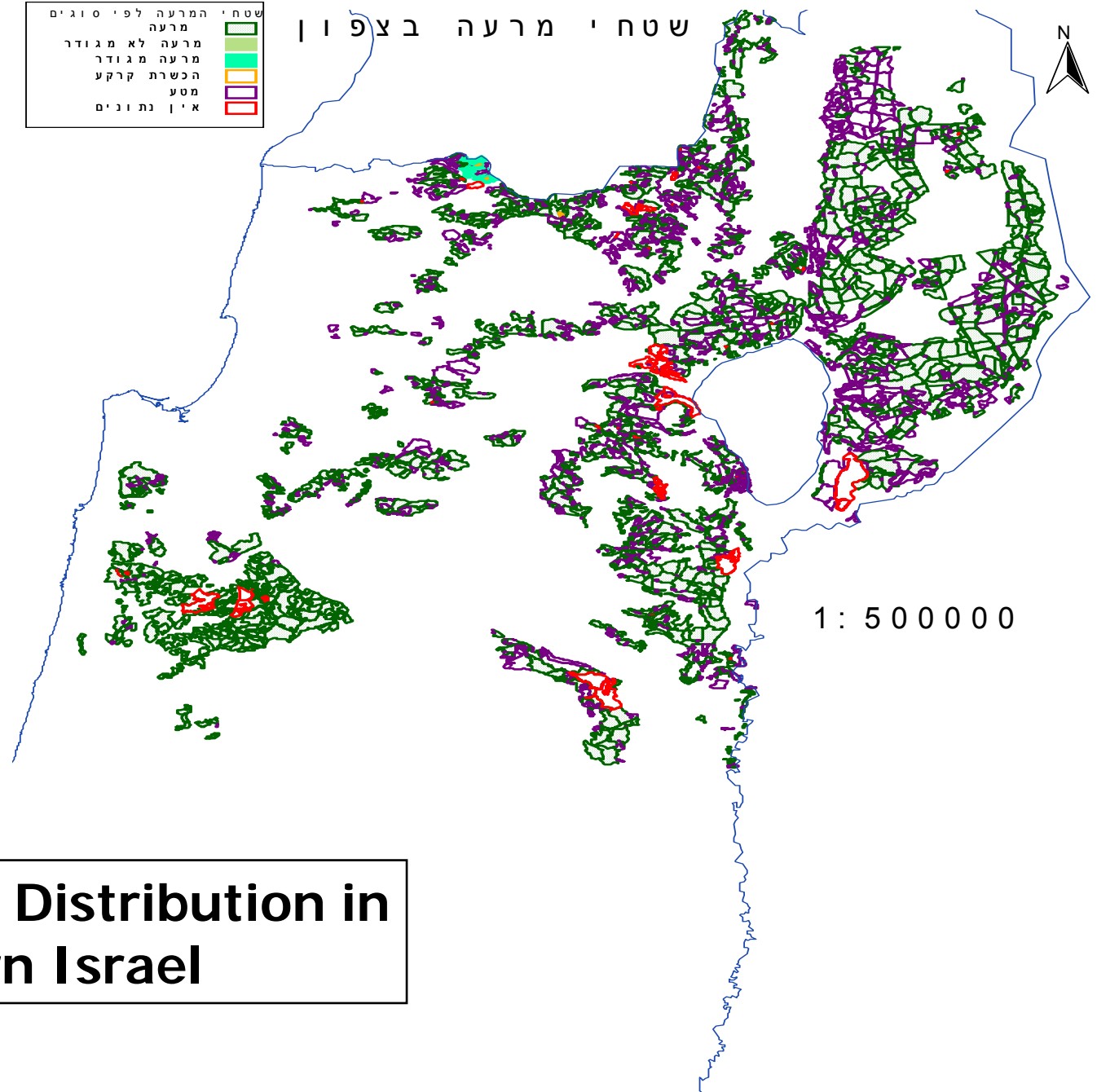
* Dollars Per Hundred **Weight**

Pasture and Beef Cattle Herd Distribution in Israel



שטחי המרעה לפי סוגים	
מרעה	■
מרעה לא מגודר	■
מרעה מגודר	■
הכשרת קרקע	■
מטע	■
אין נתונים	■

שטחי מרעה בצפון



Pasture Distribution in Northern Israel

SIZE of CATTLE OPERATIONS



Heads	Distribution %
<25	2.5
26-125	47.5
126-615	40
>616	10

IRM



- **Integrated Resource Management is a system approach to managing a beef, a dairy and a feedlot farms.**
- **The NOA software is the leading tool for IRM in Israel.**